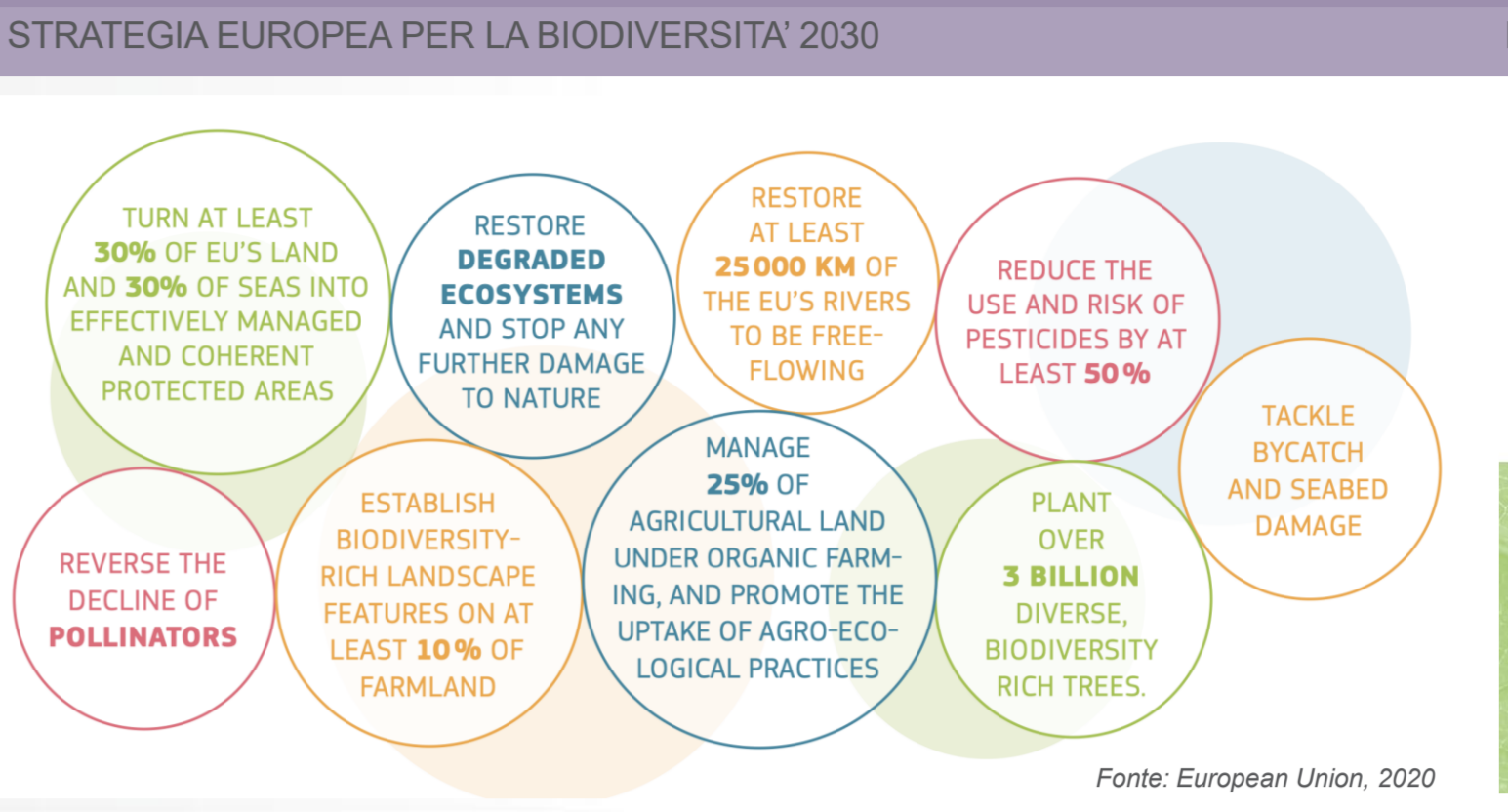
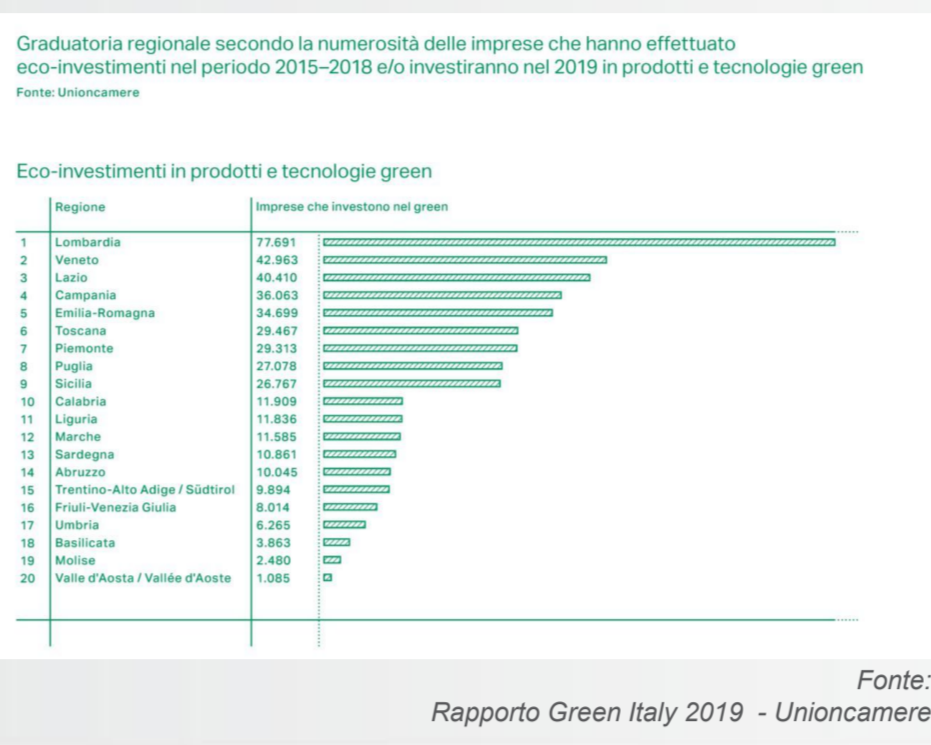
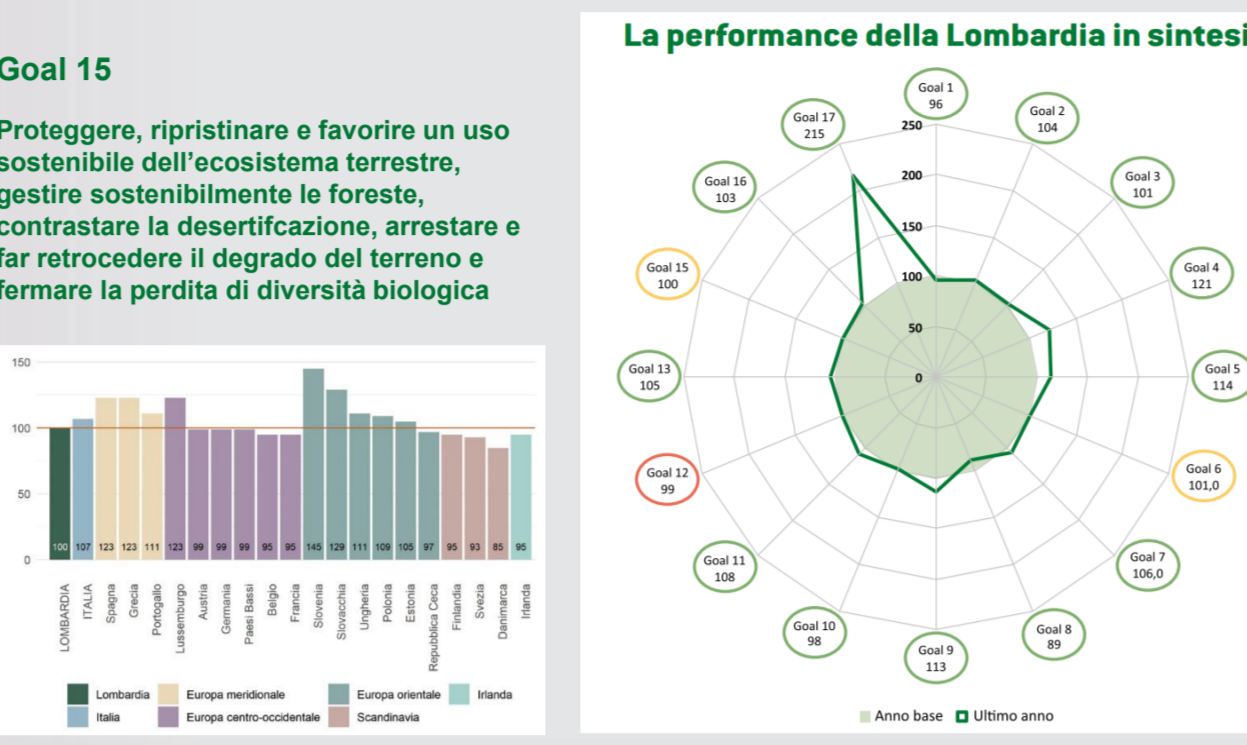
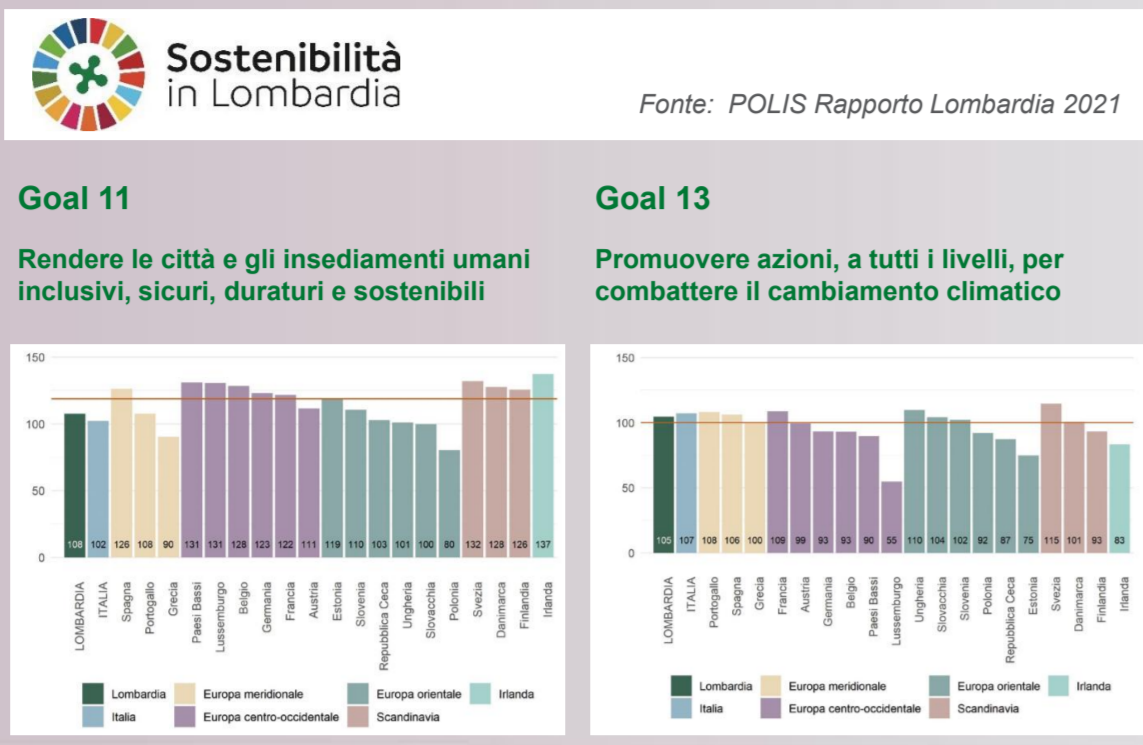
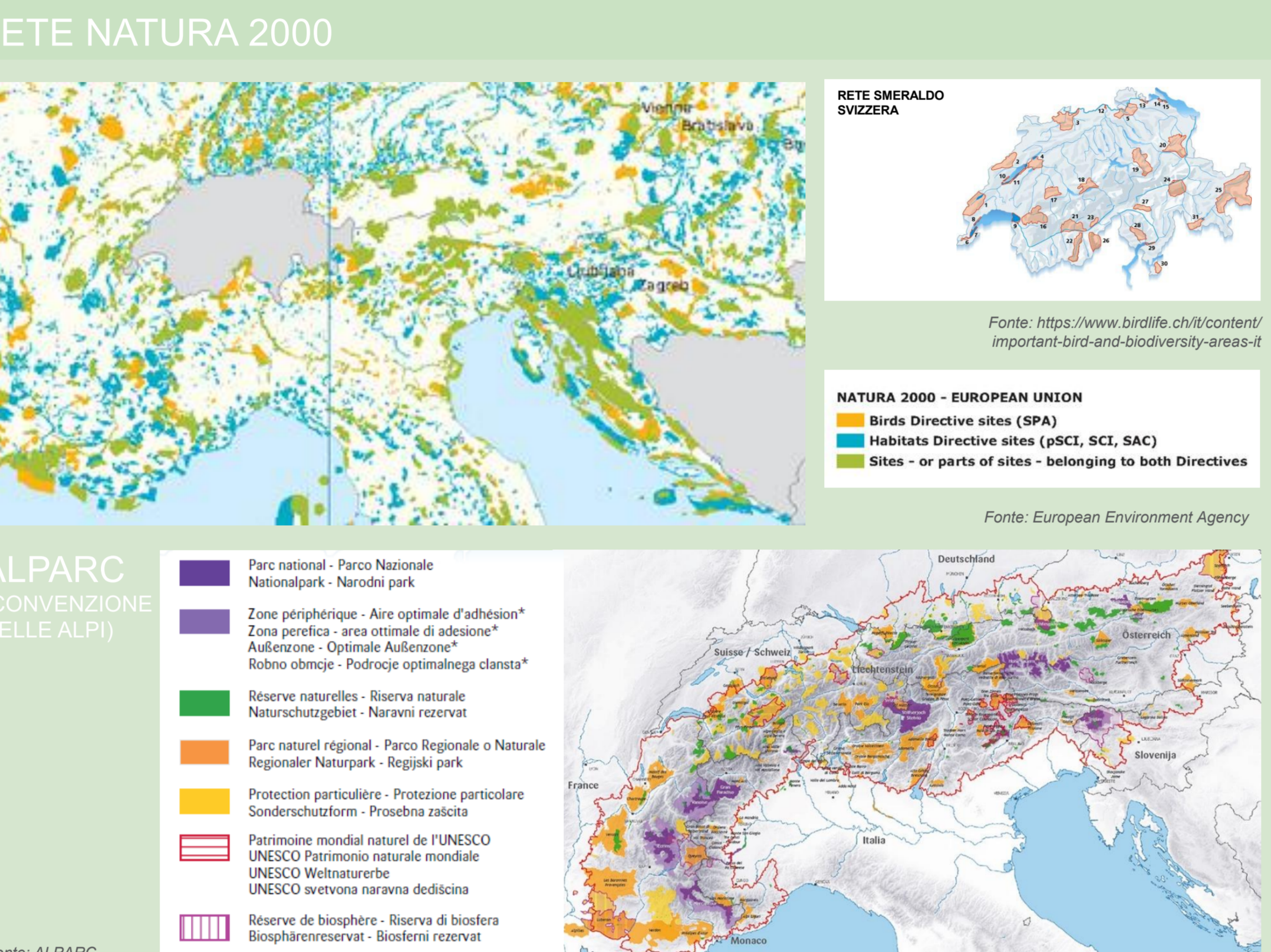
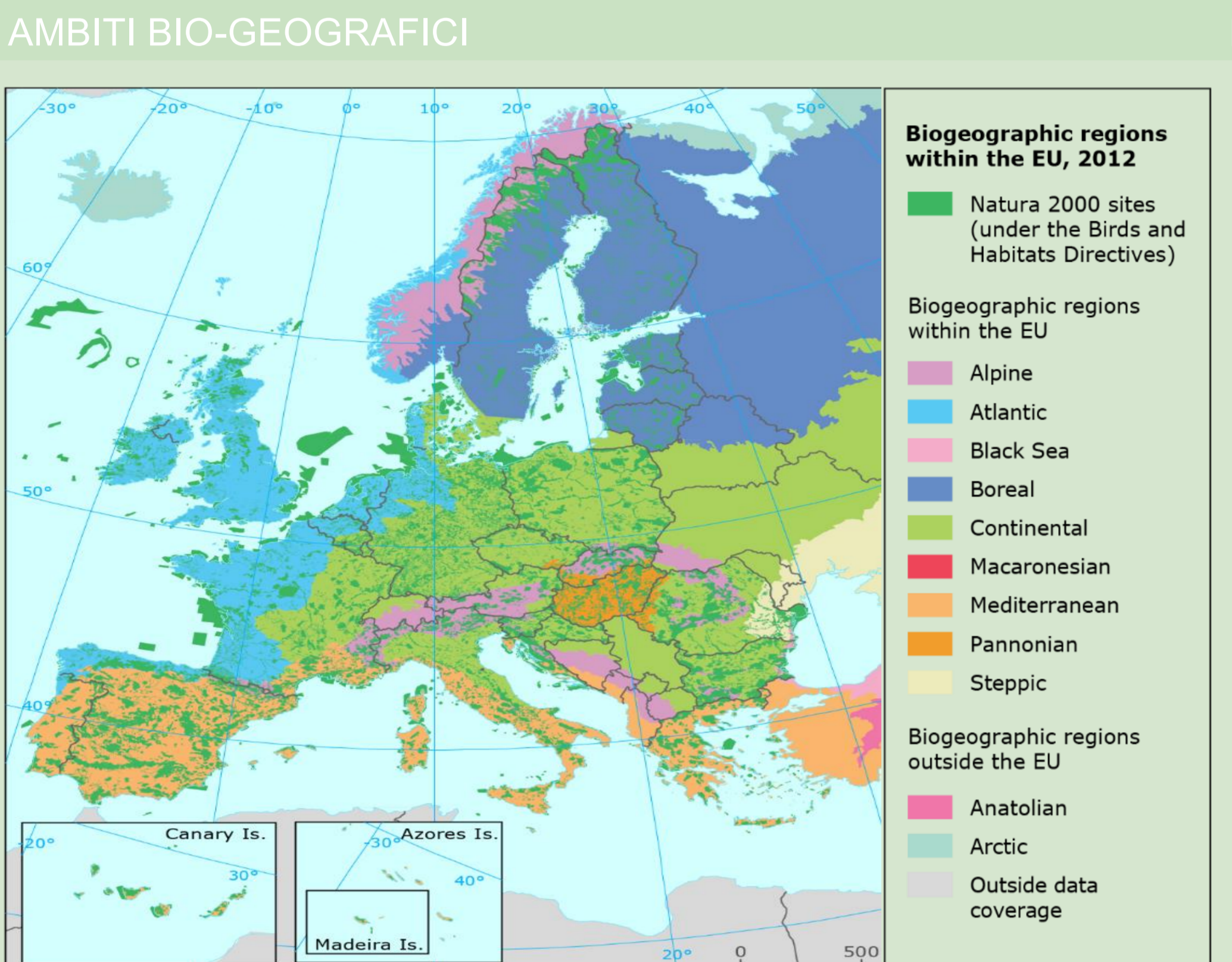


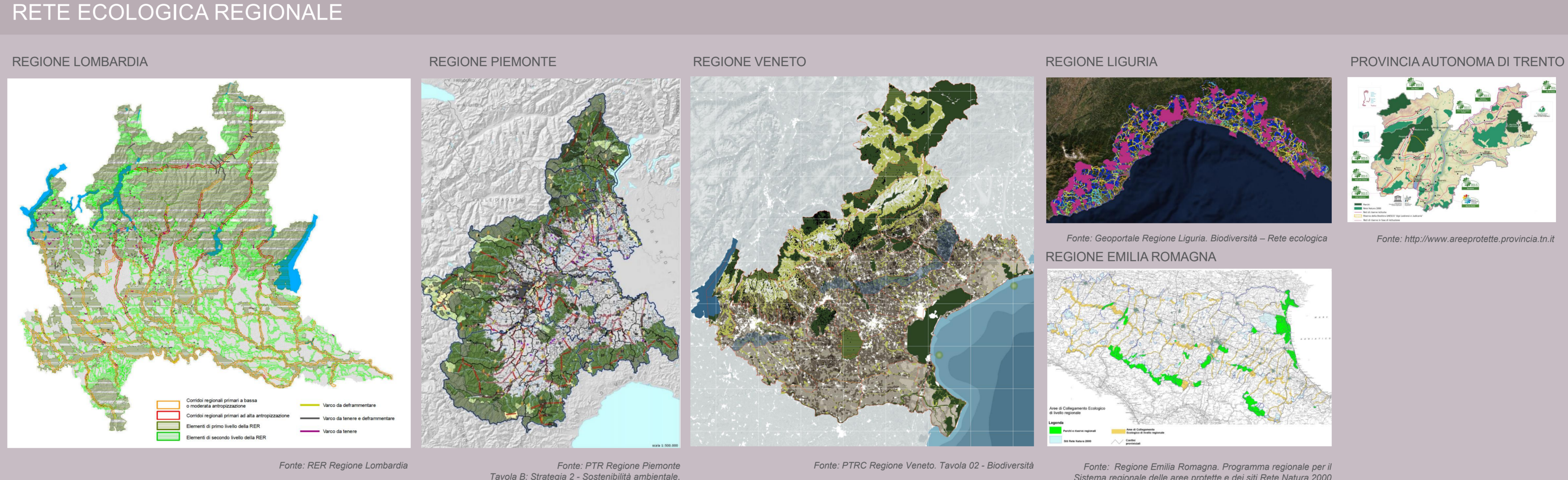
SOSTENIBILITA'



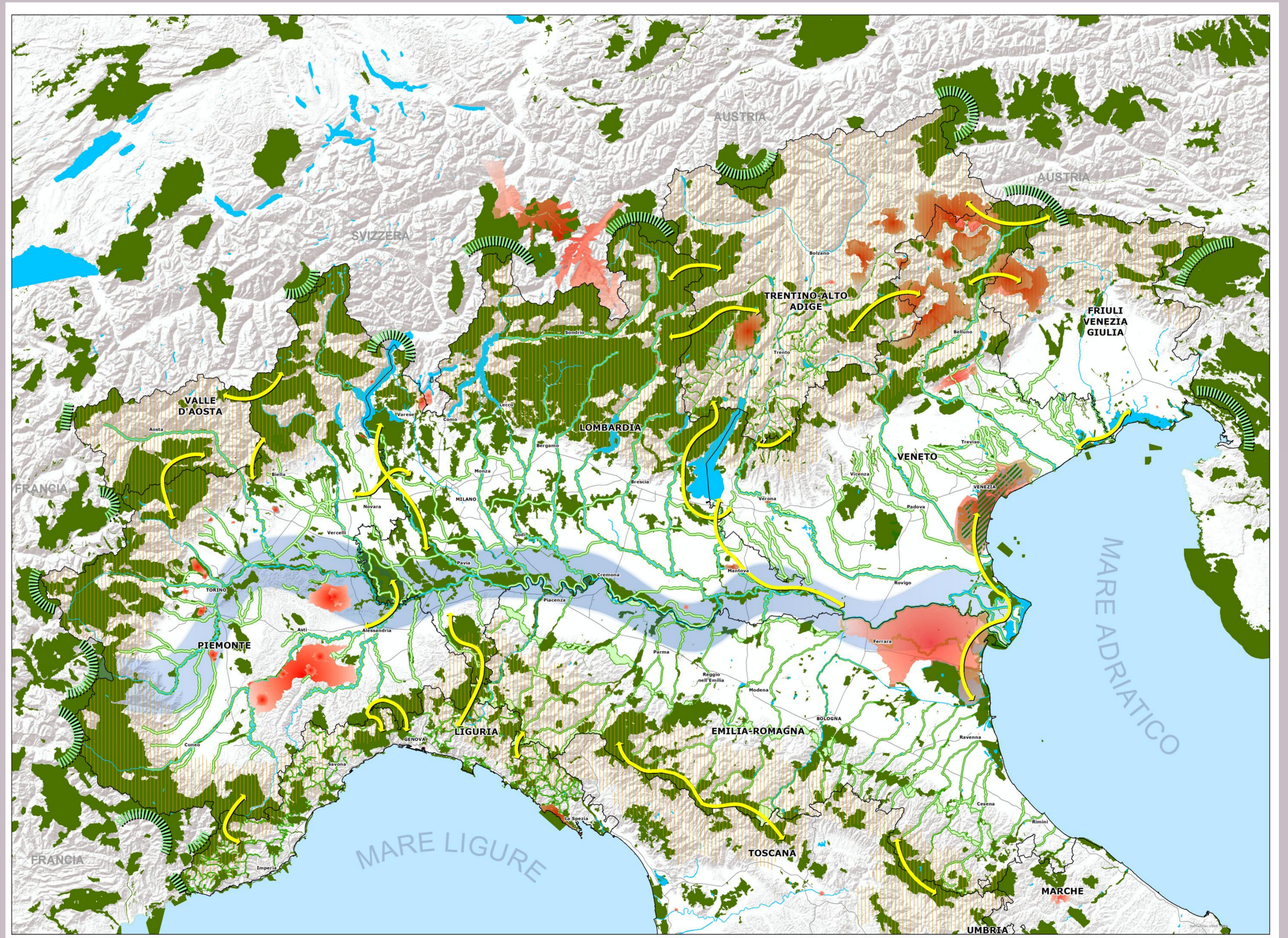
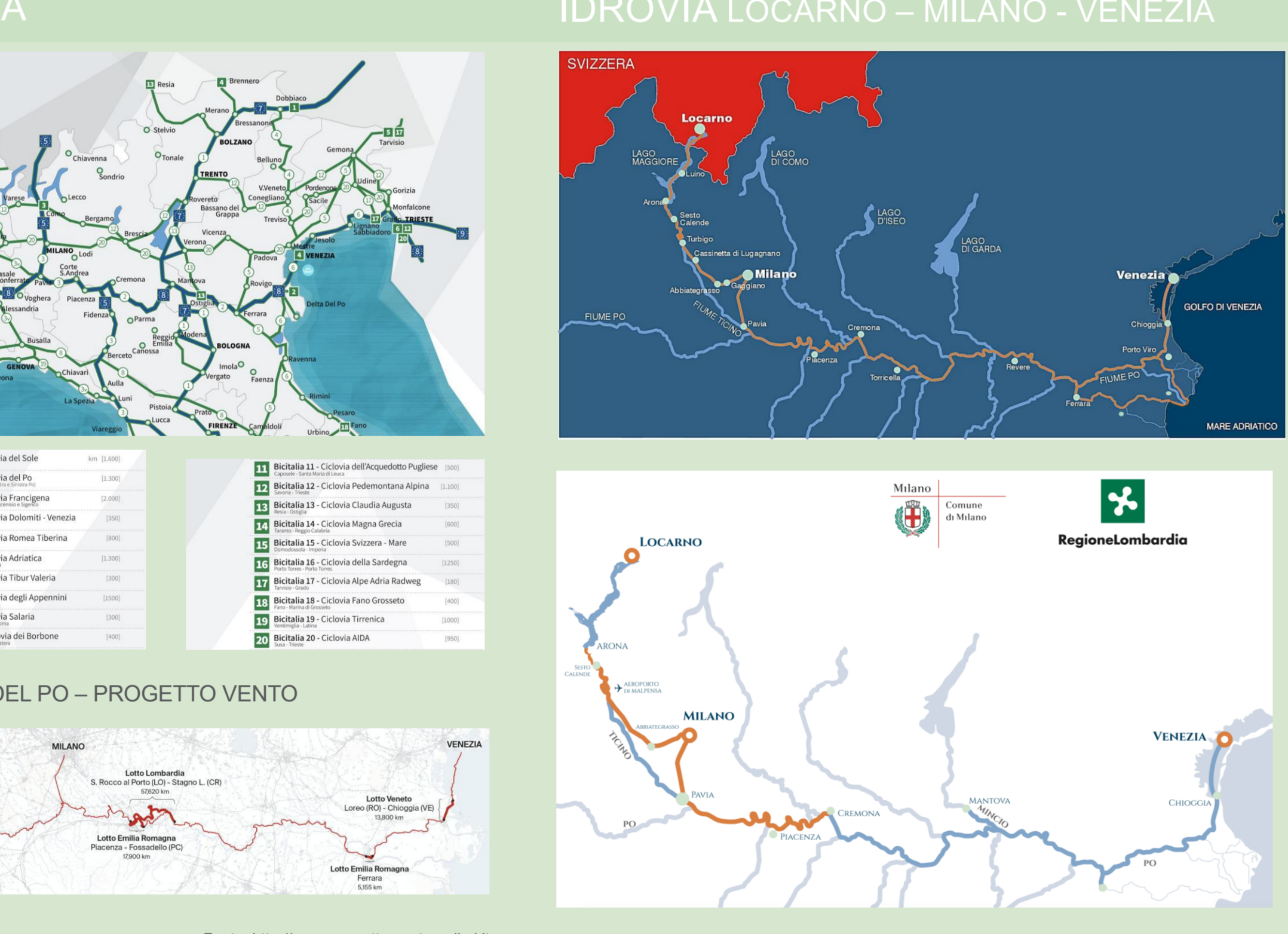
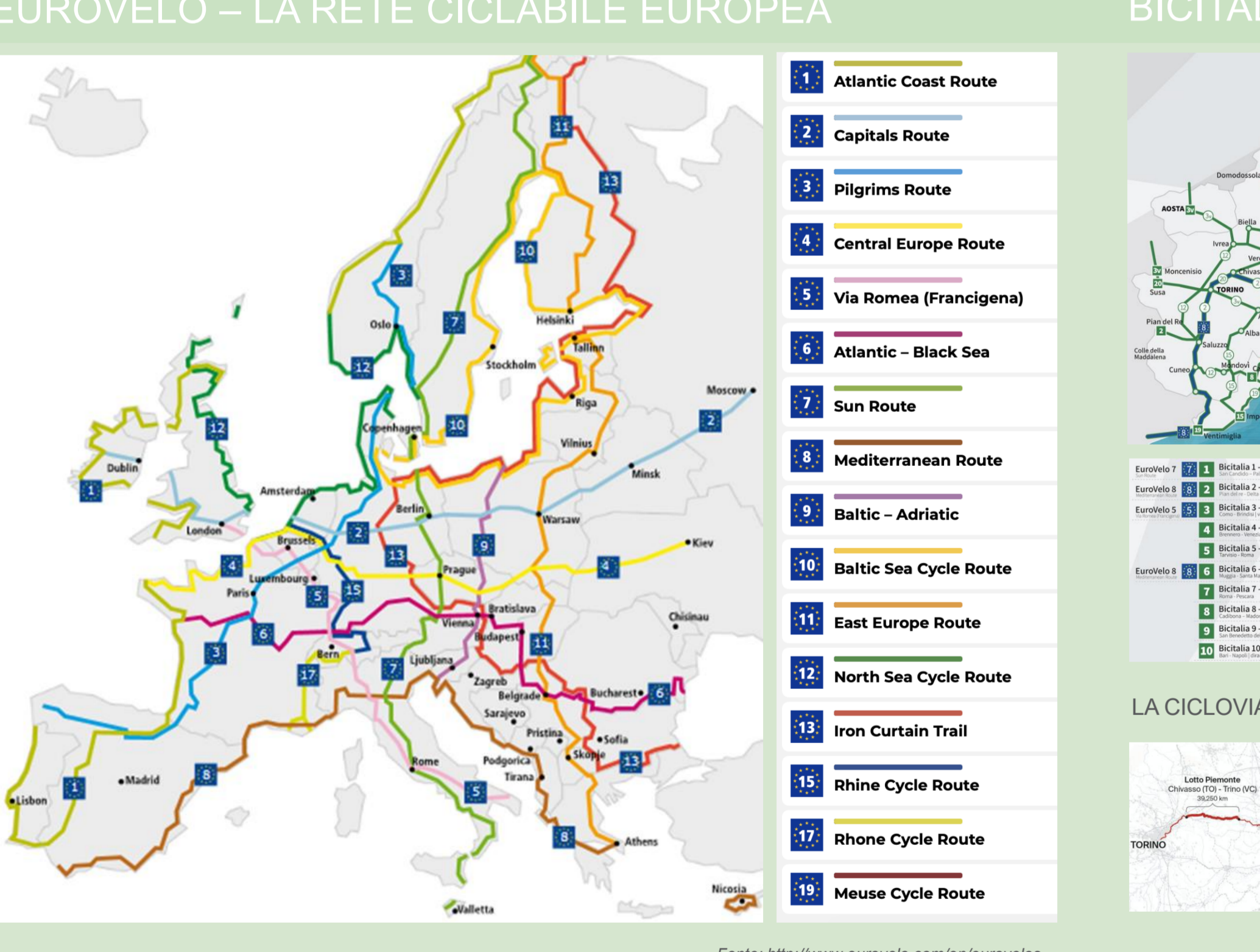
ELEMENTI DI ASSETTO AMBIENTALE



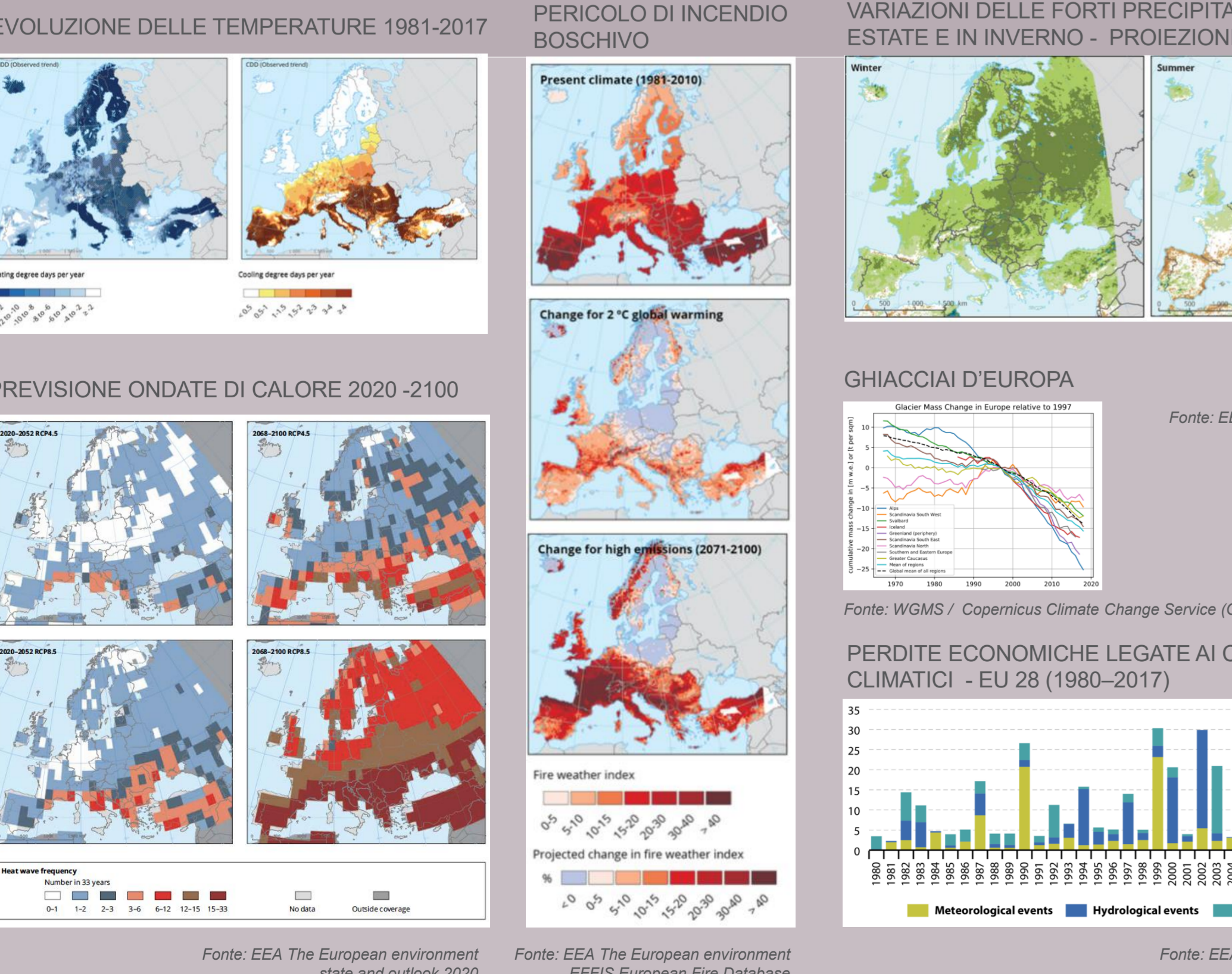
INFRASTRUTTURA VERDE



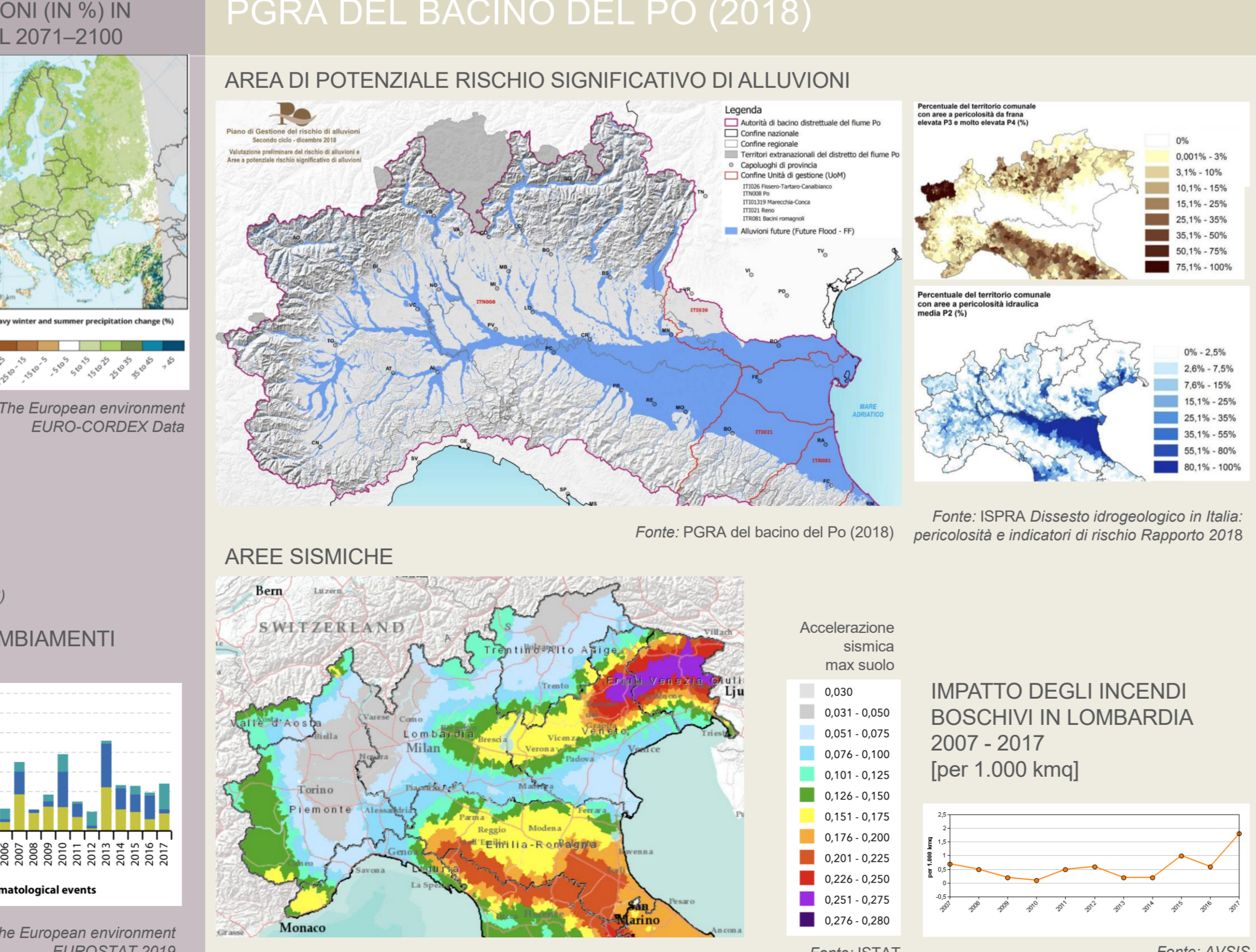
TURISMO SOSTENIBILE



CAMBIAMENTI CLIMATICI



PREVENZIONE DEI RISCHI



Piano Territoriale Regionale
APPROVATO DAL CONSIGLIO REGIONALE CON DELIBERAZIONE N. XII/1157 DEL 18/11/2025
QUADRO EUROPEO E TRANSNazionale
SCALA 1:1.000.000
PT 1b